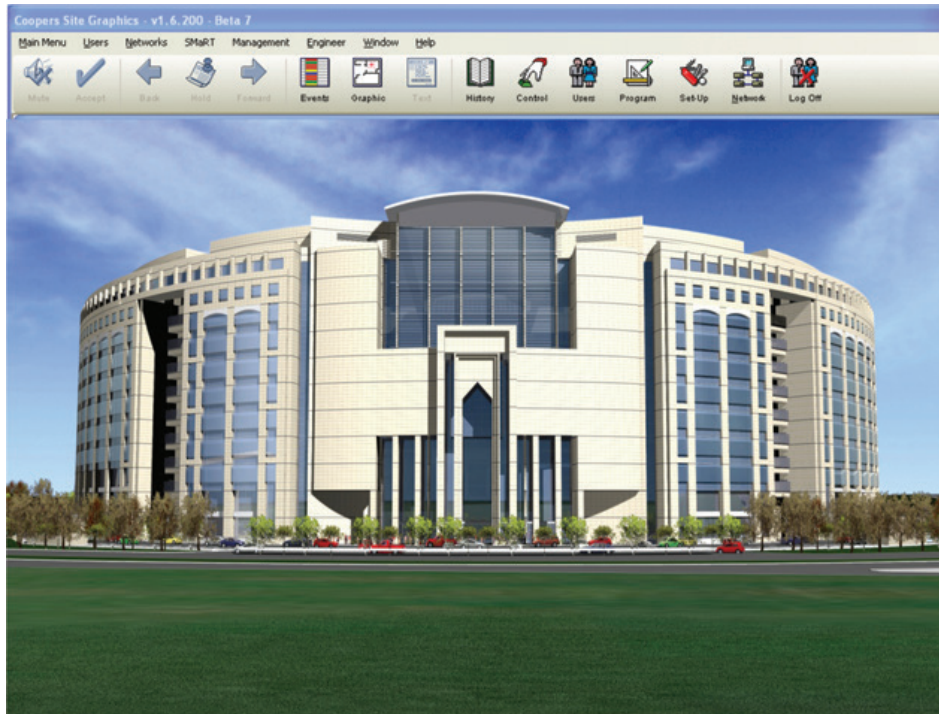


# GRAPHPACK

## Graph pack software



Graph pack software is a powerful alarm management tool and graphical user interface designed to work with many Cooper safety fire system products.

Users can monitor, control and interrogate their systems to ensure alarms are detected and dealt with quickly and efficiently. Simple and easy to use, the graph pack software includes a host of advanced features, offering users a system that's powerful and truly comprehensive. All of the information required, all of the control needed, is literally at the users fingertips.

The graph pack software not only delivers alarm information, it also records other system events and faults, allowing the generation of detailed reports. Alarms can be displayed and controlled in a variety of ways to best suit the user's requirements.

### Graph Pack Lite Software:

Designed for small 1 to 2 panel systems, the graph pack lite provides a comprehensive level of control at a very competitive price.

### Graph Pack Software:

Designed for a range of systems, the graph pack gives users the maximum level of control and accessibility over their alarm system.

### Features

- Multiple users
- Secure system
- Multiple PC work stations
- Simple navigation
- In-depth history analysis

### Benefits

- All system events displayed and record
- Fully configurable
- Simple and clear user interface
- Programmable to suit any application

## Technical Specification

| Programming Parameters                        | Quantity  |
|---|-----------|
| Event Types                                   | 32,000    |
| Graphics Pages                                | 32,000    |
| Symbols                                       | 32,000    |
| Text Pages                                    | 2,000,000 |
| Sounds  | 2,000     |
| Users   | 2,000     |
| Manual Controls                               | 32,000    |
| Time Controls                                 | 2,000     |
| Automatic Control Actions per I/P             | 255       |
| Text/Reset Text/Graphic Pages per Input State | 1         |
| Loops/Zones per Node                          | 255       |
| Inputs Per Zone                               | 255       |
| Input Types per Input                         | 16        |
| Text Page per input                           | 1         |
| Graphics Page per input                       | 1         |
| Reset Page per input                          | 1         |

## Graphics Parameters

| File | Type     | Colours    | File Size  | Loading Speed |
|------|----------|------------|------------|---------------|
| BMP  | Bitmap   | 16 million | Very Large | Medium        |
| BMP  | Bitmap   | 256        | Large      | Fast          |
| BMP  | Bitmap   | 16         | Medium     | Fast          |
| RLE  | Bitmap   | 256        | Small      | Fast          |
| WMF  | Metafile | 16 million | Small      | Slow          |
| EMF  | Metafile | 16 million | Small      | Slow          |
| GIF  | Bitmap   | 256        | Small      | Fast          |
| JPEG | Bitmap   | 16 million | Small      | Medium        |

## Symbol Parameters

| File | Resizable | Transparency | Max Size                    |
|------|-----------|--------------|-----------------------------|
| BMP  | Poor      | No           | 128 x 128                   |
| RLE  | Poor      | No           | 128 x 128                   |
| GIF  | Poor      | Yes          | 128 x 128                   |
| WMF  | Good      | Yes          | Unlimited                   |
| JPG  | Poor      | No           | 64 x 64                     |
| ICO  | Poor      | Yes          | 16 x 16, 32 x 32 or 48 x 48 |

## Sound Parameters

Graph pack lite and graph pack premium lite can use any windows .WAV (wave) file, but compressed file formats should be avoided.

## System Requirements

|                       |  |
|-----------------------|--|
| Hardware Requirements | Intel Pentium or equivalent 2GHz or better 32 bit, 1GB Memory, 80GB disc space, 1 RS232 Serial Port, 100 and/or 1000 Mps LAN ports, 1 USB port |
| Platform              | Windows XP-Pro Service Pack 2 or 3, Windows Vista, Windows 7   |
| Display               | High resolution 1024 x 768 hi-colour or true colour display with 32,768 or 16 million colours  |

## Features List

| Features List                             | Graph Pack Lite | Graph Pack                  |
|---|-----------------|-----------------------------|
| Maximum No Panels                         | 1-2             | 1-99 (dependent on version) |
| History Storage                           | 18 Months       | Unlimited                   |
| Printing of History Events                | Last 20 Events  | Unlimited                   |
| Graphics Page Printing                    | No              | Yes                         |
| Printing and Exporting of Lists           | No              | Yes                         |
| History Analysis                          | No              | Yes                         |
| Control Panel Control Dialogs             | Yes             | Yes                         |
| Control Panel Control from Graphics Pages | Yes             | Yes                         |
| Fire Device Isolation from Graphics Page  | Yes             | Yes                         |
| Fire Devince Isolation from Dialog Box    | Yes             | Yes                         |
| Manual and Time Control Lists             | No              | Yes                         |
| Alarm Reminders                           | No              | Yes                         |
| Multiple Displays (additional option)     | No              | Yes                         |
| Line Printer (additional option)          | No              | Yes                         |
| Pager Notification (additional option)    | No              | Yes                         |
| SMS Notification (additional option)      | No              | Yes                         |

## Catalogue numbers

| Description                        | Code             |
|------------------------------------|------------------|
| Graph Pack Software (lite)         | GRAPHPACK1-2LITE |
| Graph Pack Software (1 panel)      | GRAPHPACK1       |
| Graph Pack Software (2-5 panels)   | GRAPHPACK2-5     |
| Graph Pack Software (6-10 panels)  | GRAPHPACK6-10    |
| Graph Pack Software (11-20 panels) | GRAPHPACK11-20   |
| Graph Pack Software (21-99 panels) | GRAPHPACK21-99   |